

# HUSARC - pdx datasheet

(extended version/not for public use)



**PDX ID:** UZLX-STS81

**Depositor:** Agnieszka Wozniak / Laboratory of experimental Oncology, KU Leuven / Agnieszka.Wozniak@kuleuven.be

**Sarcoma subtype:** Leiomyosarcoma  
more specific (e.g. myxoid, pleomorphic ect.): [click here to enter text](#)

---

**Ex-mouse tumor morphology:** Spindle cell morphology

**Known histopathological characteristics:** SMA (cytoplasmic); desmin (cytoplasmatic); caldesmon

**Known key molecular characteristics:** *Karyotype: 46-47, XX, nca[3] / 46,XX[17]*

**Clinical data of the donor patient:**

**Gender:** female

**Age:** 67

**Primary/Metastasis:** metastasis

**Tumor localization:** [click here to enter text](#)

**Treatment/response before xenografting:** [click here to enter text](#)

**Treatment/response after xenografting:** [click here to enter text](#)

**Mouse strain:** NMRI nu/nu

**Current passage in mouse:** 19 (discontinued)

**Growth rate:** 6 months

**Used for *in vivo* experiments:** yes

**Model sensitivity to standard treatment:** [click here to enter text](#)

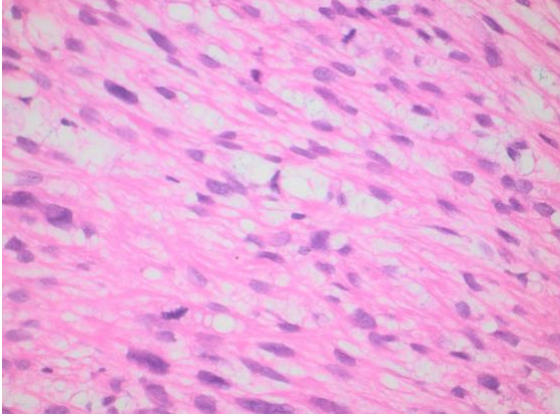
**Growing from cryopreserved tissue fragment:** not known

**Primary cells from ex-mouse sample available:** no

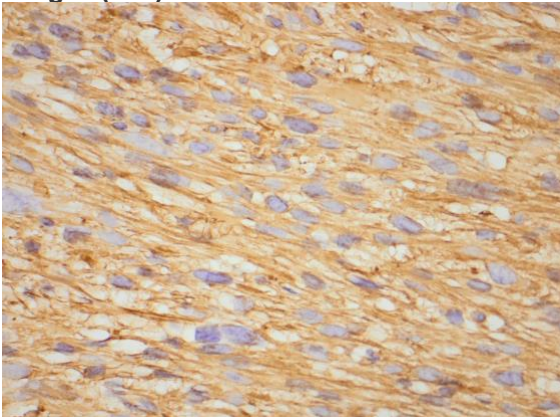
---

**References (if available):** 1. Cornillie J\*, Wozniak A\*, Li H, Wang Y, Boeckx B, Gebreyohannes YK, Wellens J, Vanleeuw U, Hompes D, Stas M, Sinnaeve F, Wafa H, Lambrechts D, Debiec-Rychter M, Sciort R, Schöffski P (\*equal contribution). Establishment and characterization of histologically and molecularly stable soft-tissue sarcoma xenograft models for biological studies and preclinical drug testing. *Mol Cancer Ther.* 2019 Jun;18(6):1168-1178. PMID: 30962320

**Images (H&E):**



**Images (IHC)**



**Normal tissue (for comparison) available:** no

**Genomic profile available:** yes

**Platform:** Shallow Sequencing

**Expression data available:** selectct

**Platform:** expected in 03/2023

**Mutational profile available:**no

**Platform:** [click here to enter text](#)

**Other (specify):** [click here to enter text](#)

**Additional Information:** Detailed clinical data, including treatment outcome of the donor patients pre- and post-engraftment available upon request for specific projects (contact: [Agnieszka.Wozniak@kuleuven.be](mailto:Agnieszka.Wozniak@kuleuven.be))

# HUSARC - pdx datasheet

(extended version/not for public use)



If you are interested please contact [Agnieszka.Wozniak@kuleuven.be](mailto:Agnieszka.Wozniak@kuleuven.be) for future procedure (MTA, collaboration options etc.).